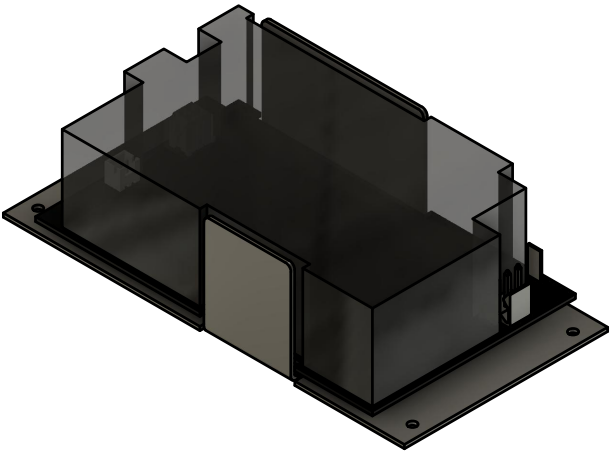


550 WATT SINGLE-OUTPUT POWER SUPPLY
FOR DESKTOP WIRE EDM MACHINE

NOTES:

- 1. DEVICE MUST BE COMPATIBLE WITH FCC CLASS B REQUIREMENTS FOR RADIATED & CONDUCTED EMISSIONS
- 2. DEVICE MUST BE TESTED UNDER MAXIMUM LOAD
- 3. DEVICE MUST BE TESTED WITH BRUSHLESS FAN



INPUT VOLTAGE	90 VAC to 264 VAC	EMI RADIATED	FCC CLASS B 3-METER
INPUT FREQUENCY	47 Hz to 63 Hz	EMI CONDUCTED	FCC CLASS B
INRUSH CURRENT	30 A at 115 VAC, or 60 A at 230 VAC	HARMONICS	FCC CLASS B
EFFICIENCY	92% to 94%	EMS	EN61000-4-2,-3,-4,-5,-6,-8,-11
OVER LOAD PROTECTION	Automatic Recovery	SAFETY	UL/CSA/EN60950-1, 2ndedition ANSI/AMMI/CSA/EN60601-1, 3rdedition
SHORT CIRCUIT PROTECTION	Automatic Recovery	OUTPUT VOLTAGE	71.0 V - 73.0 V
OVER VOLTAGE PROTECTION	Latch Off	MAX POWER	550 W
OPERATING TEMPERATURE	-20 C to +45 C	FOOT PRINT	76.0 mm x 150 mm, +- 0.5 mm
COOLING	300 W, Air free convection	MOUNTING HOLES	60.0 mm x 140 mm, +- 0.1 mm

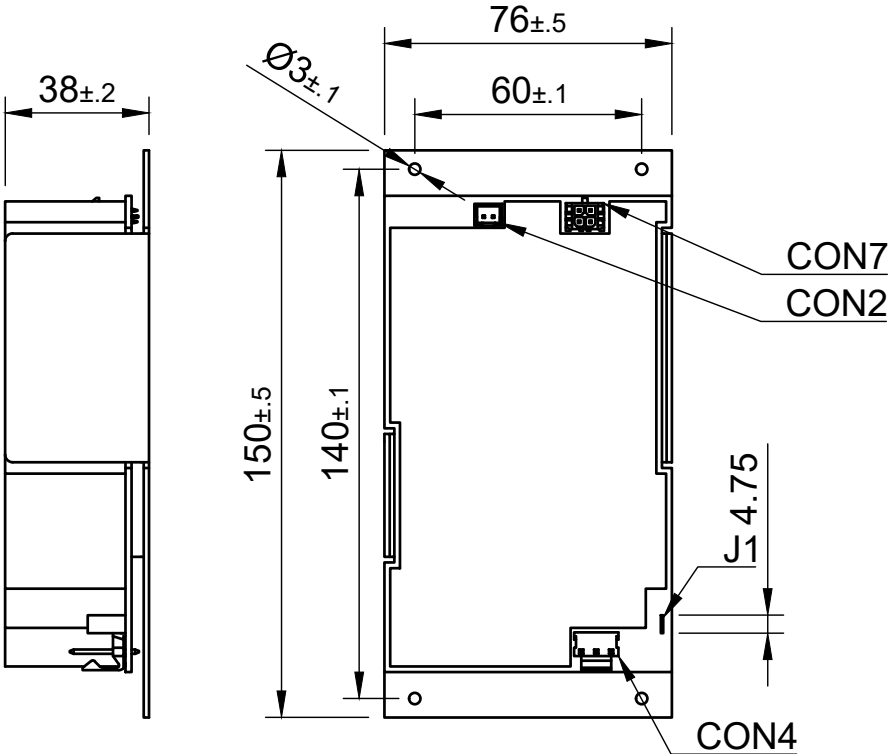
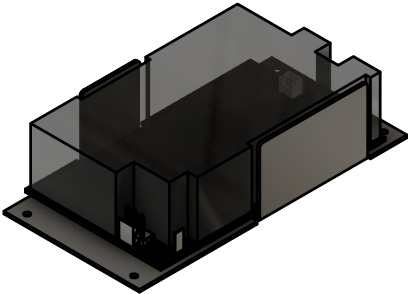
CON2	JST	B2B-XH-A	1 FAN-, 2 FAN+
CON4	Molex KK396	ZL3961-A-3P	1 AC-N, 2 NC, 3 AC-L
CON7	Molex Micro-Fit 3.0	0430450412	1,3 GND, 1,2 VOUT
J1	Vertical Quick Connect, Blade Connector	PCF187	EARTH GND

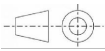
REVISION HISTORY			
REV	DESCRIPTION	DATE	APPROVED
A	INITIAL RELEASE	[24.02.23]	J. PHILLIPS
B	SECOND RELEASE	[24.05.31]	J. PHILLIPS

DESIGNED	J. PHILLIPS	[24.05.31]
APPROVED	J. PHILLIPS	[24.05.31]
TITLE RR-300-72 SMPS		
UNLESS OTHERWISE SPECIFIED		
Molex Micro-Fit 3.0 pinout labeled in accordance with Molex pin numbering standard in document SD-43045-005. J1 Connector must be 0.187" (4.75 or 4.80 mm), and compatible with TE CONNECTIVITY FASTON 1742883-1		
DEPARTMENT	PROJECT CODE PC-02	
	PROTOTYPE CODE REV B	
	UNITS mm	SCALE 1:3
		SHEET NO. 1/2

**RACK
ROBOTICS**

550 WATT SINGLE-OUTPUT POWER SUPPLY
FOR DESKTOP WIRE EDM MACHINE



DESIGNED J. PHILLIPS		[24.05.31]		<div>RACK ROBOTICS</div>					
APPROVED J. PHILLIPS		[24.05.31]							
TITLE RR-300-72 SMPS									
UNLESS OTHERWISE SPECIFIED									
<p>Molex Micro-Fit 3.0 pinout labeled in accordance with Molex pin numbering standard in document SD-43045-005.</p> <p>J1 Connector must be 0.187" (4.75 or 4.80 mm), and compatible with TE CONNECTIVITY FASTON 1742883-1</p>				DEPARTMENT		PROJECT CODE		PC-02	
						PROTOTYPE CODE		REVB	
						UNITS		SCALE	
		mm		1:2		2/2			